

**FICHE D'HOMOLOGATION
HOMOLOGATION FORM**

Homologation N°

17/P/19



**COMMISSION INTERNATIONALE
DE KARTING - FIA**

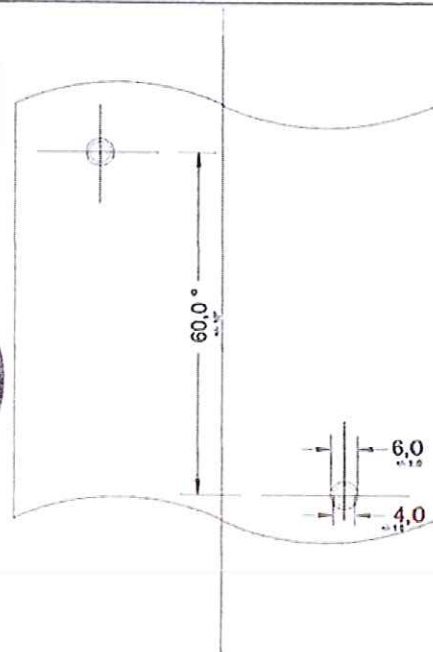
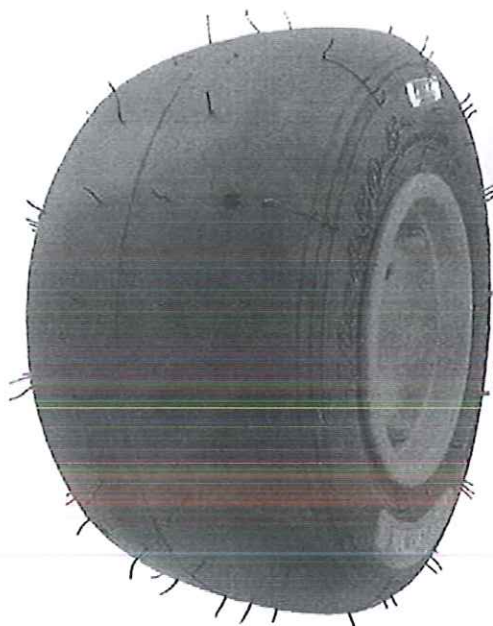


PNEUMATIQUE / TYRE

| | | |
|-------------------------|-------------------------------------|--------------------------|
| Manufacturier | <i>Tyre Manufacturer</i> | LeCont s.r.l. |
| Marque | <i>Make</i> | LeCont |
| Modèle | <i>Model</i> | Slick 10x4.50-5 LP PRIME |
| Catégorie | <i>Category</i> | Grupe 1&2 / Group 1&2 |
| Durée de l'homologation | <i>Validity of the homologation</i> | 3 ans / 3 years |
| Nombre de pages | <i>Number of pages</i> | 4 |
| Nombre de pages annexes | <i>Number of appended pages</i> | |

La présente Fiche d'Homologation reproduit descriptions, illustrations et dimensions du pneumatique au moment de l'homologation CIK-FIA. Le Manufacturier a la possibilité de les modifier seulement dans les limites fixées par le règlement CIK-FIA en vigueur.

This Homologation Form reproduces descriptions, illustrations and dimensions of the tyre at the time of the CIK-FIA homologation. The Tyre Manufacturer may modify them, but only within the limits laid down by the CIK-FIA regulations in force.



**PHOTO DU PNEU MONTÉ SUR LA JANTE
PHOTO OF THE TYRE FITTED TO THE RIM**

**DESSIN DE LA BANDE DE ROULEMENT
TREAD DESIGN DRAWING**

Signature et tampon de l'ASN
Signature and stamp of the ASN

Signature et tampon de la CIK-FIA
Signature and stamp of the CIK-FIA



Handwritten signature

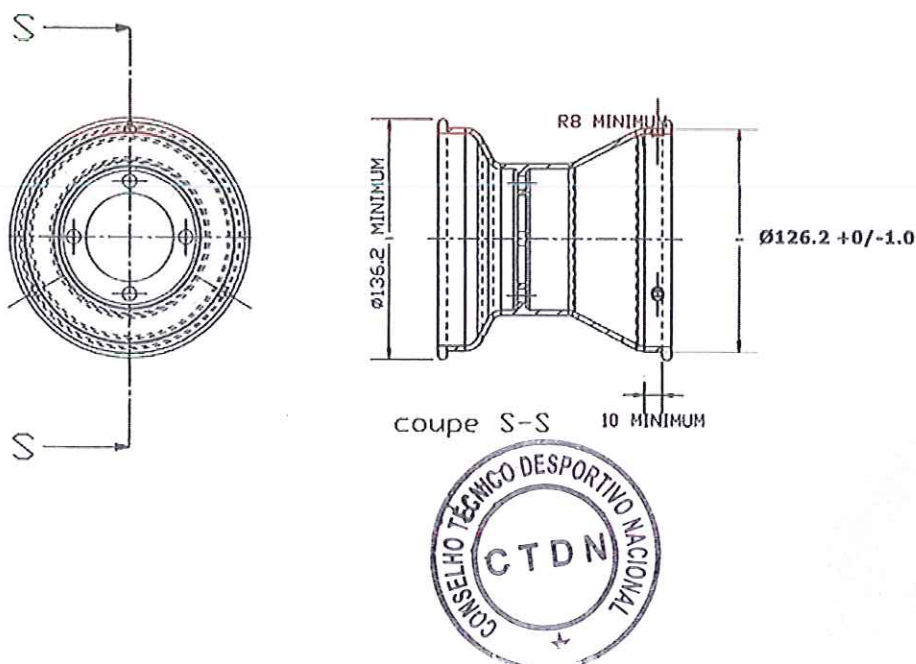




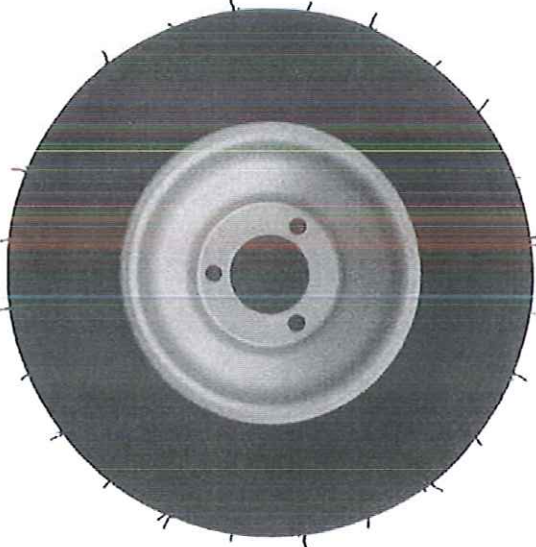


| DESCRIPTIONS TECHNIQUES | | TECHNICAL DESCRIPTIONS | | | |
|--|--|---|-----------------|---------|----------------------------|
| Sous une température de 23°C +/- 2°C, avec une humidité de 50% +/-5% | | At a temperature of 23°C +/- 2°C and with a humidity of 50% +/-5% | | | |
| Pt | Descriptions | Descriptions | Valeurs | | Tolérances |
| 1 | Dimensions | Dimensions | 10x4.50-5 | | - |
| 2 | Désignation du mélange | Tread compound designation | LP | | - |
| 3 | Pression de service | Service pressure | 0,7 bar | | +/- 0,3 bar |
| 4 | Pression de gonflage maximum | Maximum inflation pressure | 4,0 bar | | Max |
| 5 | Capacité de charge maximum | Maximum load capacity | 80,0 Kg | | Max |
| 6 | Vitesse maximale | Maximum speed | 200 Km/h | | Max |
| 7 | Rigidité latérale et verticale (sous charge de 40 kg) | Lateral and vertical stiffness (under 40 kg load) | 1,8 – 16,0 | | +/- 1 +/- 2 |
| 8 | Rigidité latérale et verticale pour SK et ICE (sous charge de 50 kg) | Lateral and vertical stiffness for SK & ICE (under 50 kg load) | ----- | | +/- 1 +/- 2 |
| 9 | Profondeur du profil | Depth of tread | 3,6 mm | | +/- 0,5 mm |
| 10 | Poids en grammes | Weight in grams | 1050 gr | | +/- 10 % |
| 11 | Nombre de plis | Numbers of plies | 2 | | - |
| 12 | Épaisseur de la bande de roulement | Tread thickness | 4,6 – 3,5 – 4,6 | | +/- 1,0 mm |
| 13 | Nombre d'indicateurs d'usure du pneu | Number of tread wear indicators | 6 | | - |
| 14 | Matériel de la carcasse | Carcass material | Polyestere | | - |
| 15 | Angle de tissage de la toile du pneu | Angle of tyre canvass | 30° | | +/- 3° |
| 16 | Type du fil de tissage (Selon ISO) | Canvass thread type (According to ISO) | 1670 | | - |
| 17 | Pneu tubeless | Tubeless tyre | Yes | | - |
| 18 | Dureté superficielle de la bande de roulement (ISO 48 :2010 – 2 échantillons de 2mm d'épaisseur) | Superficial tread hardness (ISO 48:2010 – 2 samples of 2mm thickness) | 44.4 | | +/- 5 DIDC - IRHD |
| 19 | Contrainte-déformation en traction (ISO 37:2011 – éprouvette type 3) | Tensile stress-strain (ISO 37:2011 – type 3 sample) | At 100% | At 300% | At 100% At 300% |
| | | | 1,0 | 4,4 | +/- 0.5 MPa +/- 0.8 MPa |
| 20 | Classification (selon ISO 37:2005 – 300%) | Classification (according to ISO 37:2005 – 300%) | PRIME (medium) | | OPTION (hard) |



| B | DESSIN EN SECTION TRANSVERSALE ET MESURES DU PNEU MONTÉ SUR UNE JANTE | B | DRAWING OF CROSS SECTION AND DIMENSIONS OF TYRE FITTED TO A RIM | | | | | | | | | | | | | | | | | | |
|--------------------------|---|---|--|--------------------------|--|----|----|-------------|-----------|-------------|---------|-----|---------|-----|---------|-----|---------|-----------------------|--|--|--|
| | | | <table border="1"> <thead> <tr> <th colspan="2" data-bbox="1109 387 1484 448">Tolérances Tolerances</th> </tr> <tr> <th data-bbox="1109 448 1268 504">mm</th> <th data-bbox="1268 448 1484 504">mm</th> </tr> </thead> <tbody> <tr> <td data-bbox="1109 504 1268 616">Diam. 126,2</td> <td data-bbox="1268 504 1484 616">+0,0 -1,0</td> </tr> <tr> <td data-bbox="1109 616 1268 728">Diam. 262,0</td> <td data-bbox="1268 616 1484 728">+/- 6,0</td> </tr> <tr> <td data-bbox="1109 728 1268 840">120</td> <td data-bbox="1268 728 1484 840">+/- 2,0</td> </tr> <tr> <td data-bbox="1109 840 1268 952">100</td> <td data-bbox="1268 840 1484 952">+/- 5,0</td> </tr> <tr> <td data-bbox="1109 952 1268 1064">131</td> <td data-bbox="1268 952 1484 1064">+/- 6,0</td> </tr> <tr> <td colspan="2" data-bbox="1109 1064 1484 1120">Remarques Comments</td> </tr> <tr> <td colspan="2" data-bbox="1109 1120 1484 1211"> </td> </tr> </tbody> </table> | Tolérances Tolerances | | mm | mm | Diam. 126,2 | +0,0 -1,0 | Diam. 262,0 | +/- 6,0 | 120 | +/- 2,0 | 100 | +/- 5,0 | 131 | +/- 6,0 | Remarques Comments | | | |
| Tolérances Tolerances | | | | | | | | | | | | | | | | | | | | | |
| mm | mm | | | | | | | | | | | | | | | | | | | | |
| Diam. 126,2 | +0,0 -1,0 | | | | | | | | | | | | | | | | | | | | |
| Diam. 262,0 | +/- 6,0 | | | | | | | | | | | | | | | | | | | | |
| 120 | +/- 2,0 | | | | | | | | | | | | | | | | | | | | |
| 100 | +/- 5,0 | | | | | | | | | | | | | | | | | | | | |
| 131 | +/- 6,0 | | | | | | | | | | | | | | | | | | | | |
| Remarques Comments | | | | | | | | | | | | | | | | | | | | | |
| | | | | | | | | | | | | | | | | | | | | | |

Jante 5" standardisée / Standardised 5" rim



| C | PHOTOS ET INSCRIPTIONS | Seules les inscriptions qui ne changeront pas tout au long de la fabrication sont reportées ci-dessous. | | |
|---|-------------------------|---|---|---|
| C | PHOTOS AND INSCRIPTIONS | Only inscriptions which will not change during production are mentioned below. | | |
| Photo du flanc extérieur du pneu Photo of tyre external side wall | | Inscriptions sur le flanc extérieur du pneu Inscriptions on tyre external side wall | | |
|  | | Texte Text | Hauteur Height | Trait Stroke |
| | | <p>LeCONT  (Printed)</p> <p>10X4.50-5</p> <p>LP</p> <p>CIK F/Z - PRIME</p> <p>FOR RACING PURPOSE ONLY</p> <p>MAX INFLATION PRESSURE</p> <p>4,0 KG/CM² – 58 PSI</p> | <p>11,0</p> <p>8,0</p> <p>8,0</p> <p>4,5</p> | <p>0,8</p> <p>2,0</p> <p>2,0</p> <p>0,5</p> |
| Photo du flanc intérieur du pneu Photo of tyre internal side wall | | Inscriptions sur le flanc intérieur du pneu Inscriptions on tyre internal side wall | | |
|  | | Texte Text | Hauteur Height | Trait Stroke |
| | | <p>LeCONT </p> <p>TUBELESS</p> <p>10X4.50-5</p> <p>FOR RACING PURPOSE ONLY</p> <p>MAX INFLATION PRESSURE</p> <p>4,0 KG/CM² – 58 PSI</p>  | <p>18,0</p> <p>7,0</p> <p>11,0</p> <p>4,5</p> | <p>3,0 / 1,5</p> <p>0,8</p> <p>0,8</p> <p>0,5</p> |